



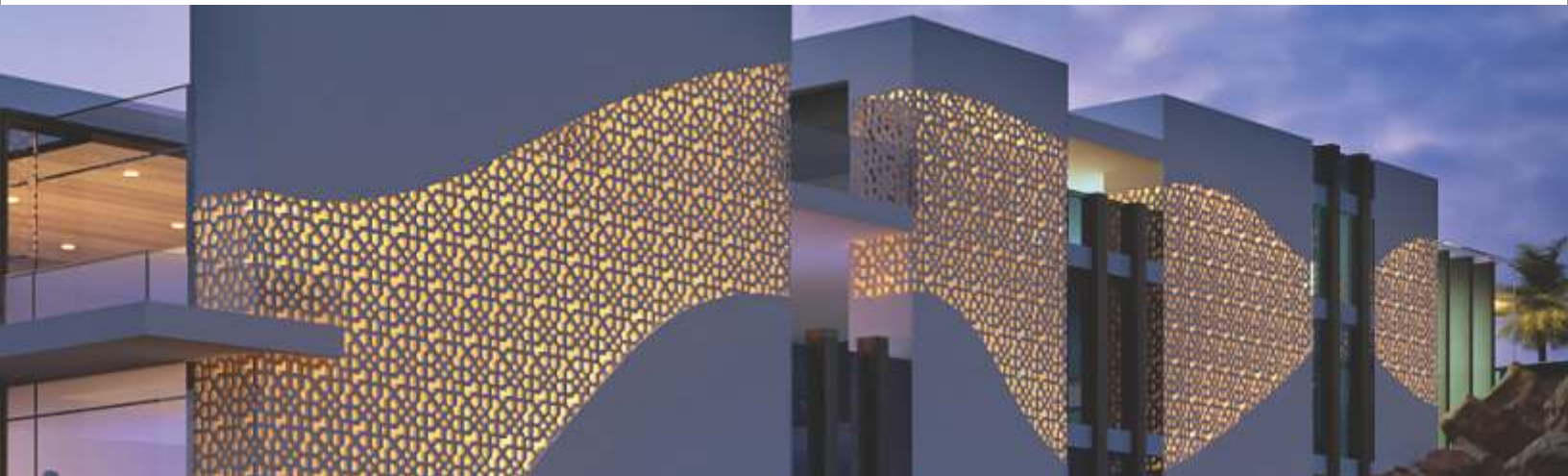
www.kuberfibrostone.com



A unit of KUBER GROUP of companies

KUBER FIRBROSTONE

Decorative GRC Products for buildings & constructions



Company Profile

Kuber Fibrostone exhibited the sincere commitment to quality by being the most reliable Manufacturer, Supplier, Exporter firm of high performing GRC, Fiberglass & Composite Products. Backed with strong technological expertise we are at the innovative forefront to bring forth a wide assortment of quality products, which includes high in demand GRC Products and FRP sheets (Tuff Glass Uv). Tuff Glass UV is only BIS certified brand in India. Being a customer focused organization our products are designed and developed by keeping our clients' interest in mind, which includes durability, resistance to wear and tear, strength, light weight, fade resistance, weather resistance, easy of installation, and chemical resistance.

Our infrastructural set up is constantly upgraded and second to none in terms of scalability and adaptability. This is why, we are reckoned as the innovative leaders pioneering the industry with our highly functional product range. Our organization is based on the pivot of total quality management, which indeed helps us to nurture our vision of continued competence. Besides, our integrity and unsurpassed operational excellence earned us repute of being reliable entity for a huge client base. We are delivering greater value to our esteemed clients and attaining highest levels of quality commitment.



Company USP

Primary Competitive Advantage

- Experienced R & D Department
- Good Financial Position & TQM
- Large Product Line
- Large Production Capacity
- Huge testing lab in-house

Why Us?

Over the last two decades, we have achieved astounding success in the industry of manufacturing and supplying GRC products (Fibrostone) & FRP products (Tuff Glass Uv). We have been providing our customers with customised solutions for manufacturing and packaging of products.



PREMIUM QUALITY RANGE
DYNAMIC TEAM MEMBERS
QUALITY CHECK DEPARTMENT
CUSTOMIZATION FACILITY
ETHICAL BUSINESS POLICIES
TIMELY DELIVERY OF CONSIGNMENT
WIDE DISTRIBUTION NETWORK
SOUND INFRASTRUCTURAL SETUP

OUR QUALITY ASSURANCE

Our unmatched quality of products has helped us in gaining the trust and respect of our valued customers around the globe. Our highly trained professionals possess complete knowledge regarding the process of production. We have a separate Quality Management Division which functions on the principle of Total Quality Management. Our range is fabricated using quality raw material like UV stabilized resin, high quality chopped strands mats, special reinforcements. We manufacture our range in conformation with the ASTM, British and IS standards. Further, we are also recognized with the ISO 9001:2000 certificate. We implement a strict control over the quality of products and check that the features are in accord with the latest industry standard and customer's specifications.

OUR TEAM

Our team is a family of dedicated workers committed towards brilliance and customer satisfaction. We have a blend of both young and knowledgeable technicians who work in perfect synchronization with each other to design products as per the necessities of the clients. Our product range passes through strict quality measures and is adequate in fulfilling the requirements of the clients completely. We make sure that all our products reaching our clients in the calculated time frame and in appropriate condition. Our efficient team of engineers, designers, quality controllers and sales and marketing professionals with their continuous efforts has ensured a huge client base around the world.

CLIENTELE

Being a client centric organization, our aim is to meeting the precise requirements of our clients. We plan and carry out all our processes and endeavors keeping this aim in mind. Our superior quality product and market competitive price has helped us in building a vast customer base across the country.

WHAT IS GRC?

WHAT IS GRC? Glass fiber Reinforced Concrete (Sometime called Glass Reinforced Concrete.) is a mixture of cement , fine aggregate, water, chemical admixtures and Alkali resistant Glass fibers There are numbers of different manufacturing process: the most common are Hands Spray and Pre-mix, see HOW IS GRC MANUFACTURED. Glass fiber reinforced Concrete (GRC) is a material which today is making a significant contribution to the economics, to the technology and to the aesthetics of the construction industries world wide. This environment friendly composite , with its low consumption of energy and natural raw material is being forming to a great variety of product and has won firm friends among designers, architect, engineers and end users for its flexible ability to meet performance, appetite and cost parameter. Since its introduction in 1969 , GRC has matured and today's designers has available to him depending up on his performance requirement, a range of matrix modifier such as acrylic polymer, rapid set cement and additives to improve the long term stability of the material. Extensive independent tests and performance data are available on all aspect of matrix formulation. The Alkali Resistant Glass fiber is generally used at the 3-5 % level in the manufacture of factory finish pre fabricated product either by the spray process or using traditional concrete casting method. It is also used in the 1 – 2 % range for reinforced renders as a site applied mix and can also be used to control plastic shrinkage cracking, micro cracking and bleeding in site –cast concrete.

GRC GENERAL DESIGN MIX

Raw Material	Spray(KG)	Casting (KG)
Cement	50	50
Fine aggregate (Silica sand)	50	50
Super Plasticizer	0.5	0.5
Polymer SBR	0.7	0.7
AR Glass fiber	3 – 5	2.5 – 4
Water	13.5	14.5

PRODUCTS WE OFFER

GRC CLADDING

We are counted amongst as the prime manufacturers and suppliers of an excellent quality collection of **GRC Cladding**. The offered products finds widespread usage in architecture based applications. GRC Cladding offered by us allows architects and engineers a material from which most ambitious designs can be created. Moulded to form modern futuristic designs or replicating traditional historic features, GRC cladding can also be painted, coloured with natural white or grey smooth or textured finish.

Features

- High strength
- Fine finish
- Smooth texture



GRC Jali

GRC Jalis is cement based composite material with alkali resistant fibers that are randomly dispersed through the product. Glassfibre Reinforced Concrete (GRC*) is one of the most versatile building materials available to architects and engineers. Developed in the twentieth century, GRC has been making a significant contribution to the economics, technology, and aesthetics of modern construction worldwide for over 30 years. GRC is not a single material but a family of high-performance cement-based composites reinforced with special alkali resistant glass fibres, which can be engineered to suit a wide range of applications.

Features

Smooth finish
Exemplary design
Stylish



GRC Pillars

We offer a wide range of **GRC Pillars** in innumerable design and style options with smooth surface finish and high strength. These can withstand heavy load and provide maximum safety. Fabricated using superior quality material, these pillars and balusters are conformed on various national and international standards and can also be customized as per the requirements of clients.

Features

High strength
Durability
Weather resistance
Fade resistance



GRC Sun Sheds

We manufacture an exclusive range of **GRC Sun Sheds** that are available in various matchless design and patterns. Fabricated using superior quality material such as UV stabilized resin and chopped strands mats, these sun sheds are high in strength, smooth in finish and heat resistant. We also offer customization as per the requirements of clients.

Features

- Moisture proof
- Fire proof
- Weather resistant
- Durable



GRC Dry Wall Cladding

G.R.C dry wall cladding offered by us enable it to be used in different ways in construction as well as decoration of building walls. In simplest form, GRC when reinforced with alkali resistant glass fibres helps it to be used on variety of substrates so as to provide durable finish standards as well as decorative finish. These can be applied over external insulation as part of a system for upgrading thermal characteristics of wall. Further, glass fibre reinforcement also gives a long-lasting & crack-free performance.



GRC Cornice

External and internal cornice's are a very simple and effective way to enhance the design and visual looks of a building. Architectural cornice serves a number of aesthetic functions. A building with a cornice is more pleasing to the eye. It also provides a better finish to the building. Cornice's are used in buildings at lower as well as higher levels. They can be done in white smooth finish (ready to be painted) or a pigmented (smooth or sand) finish. The cornice can be customised to the customer's requirement and these can be easily installed on the blockwork of the building. TCTI's expertise allows the cornice's to be installed with minimal effort.



GRC BALUSTERS

We are the renowned manufacturers of **GRC Balusters** that are fabricated using superior quality material in compliance with set industrial standards. These pillars are available in various standard and customized forms and specifications. Our easy and convenient to install range is available in various designs to choose from.

Features	High strength
	Smooth surface
	Moisture proof
	Fire proof
	Worm resistant



Competitive Advantages of the products

1. High Strength to weight ratio
2. Reduced weight leads to lower transport and erection cost
3. Maintenance free (no steel to corrode)
4. High impact strength
5. Freedom of design with the ability to form complex shape
6. Improved surface detail and quality of finish
7. GRC is excellent for reproduction and renovation
8. GRC is environmentally friendly
9. GRC's high strength allows design of thin, lightweight cladding elements

GRC Brackets



GRC Dome



Tuff Glass UV FRP Sheets



Profile Sheet



Turbo Fan



E-mail : kuberfibrostone@gmail.com

Premium quality range
Dynamic team members
Quality check department
Customization facility
Ethical business policies
Sound infrastructural setup
Wide distribution network
Timely delivery of consignment

A unit of KUBER GROUP of companies
KUBER FIRBROSTONE
Decorative GRC Products for buildings & constructions

FACTORY :

E-187, Heerawala Industrial Area Ext.
Kanota, Jaipur-303012 INDIA
Tel. : +91-93144 83672, +91-98290 60496